

AIA MIDDLE PA CHAPTER NEWSLETTER

FRASER CENTRE TOUR

The ride in the freight elevator was rickety and cramped at the Fraser Centre, but well worth the trip up to the penthouse level. The 14 stories, rising 159 feet off Beaver Avenue in State College, put the building as one of the soon to be, highest structures in downtown State College. This was made possible only after the Ordinance prohibiting this height was recently rescinded.

The AIA Middle Chapter's host for this informative tour was LS Fiori Construction. Reynolds Baldwin, Eric Ross, and John Wolf from Fiori proudly pointed out highlights and challenges faced throughout the project as the tour group began at the penthouse level (most expensive sold to date: \$1.6 million) and worked its way down thru each level.

Fiori had won the bidding contract for the core building and core utilities. Starting in October of 2014, they expected to be completed with their contract in December of 2016. Total square footage of the building is shown as 933,000 total square feet. Total estimated cost is \$80 - \$85 million dollars.

Below the penthouse level were floors of condos (29). Smaller in size and ceiling height, they still offered great views of the Nittany Valley and State College. Continuing down the stairs brought us to the hotel levels of rooms. The lower floor of the hotel consisted of meeting rooms, a separate business bar, and the hotel lobby.



Below the hotel were two floors of retail. A couple of the businesses going in were Target and H & M clothing. An interesting feature of H & M was the polished concrete floor with exposed aggregate.

Finally the lowest level (15 feet below Caulder Alley and 190 feet below the roof) was the secure gated parking area that will be used for the tenants and a few for the businesses.

The AIA Middle Chapter wishes to thank L.S. Fiori for making this tour possible!!

Contributing to this article: Dave Reasinger, Assoc.AIA, Rebecca Griffith, AIA, Anne McGrath, and Tom Columbus Jr., AIA, LEED AP

(See more photos on Page 2)

1 Fraser Centre Tour

2 Frazer Centre Photos

3 Good of the Order

4 Affiliates Corner

[Architectural Registration Exam Study Materials Find a Home](#)

5 Modernfold's Second Annual Lunch & Learns

6-7 Our Advertisers

AIA MIDDLE CHAPTER ADDRESS

If you are using the U. S. Postal Service to Contact the AIA Middle PA Chapter, please use the following:

AIA Middle PA Chapter
Brian Endler, AIA
Stiffler McGraw Architects, LLC
1731 N. Juniata Street
P. O. Box 462
Hollidaysburg, PA 16648

NEXT MID POINTS

Deadline for articles and information for the next newsletter is:

September 16, 2016

Please contact Dee Columbus,
Editor, tdta2000@comcast.net

STAY CONNECTED

Please send new member information and any changes and/or additions in your contact information including email addresses to::

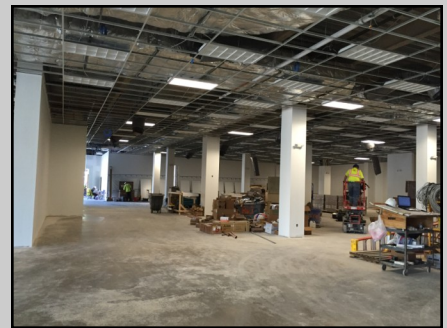
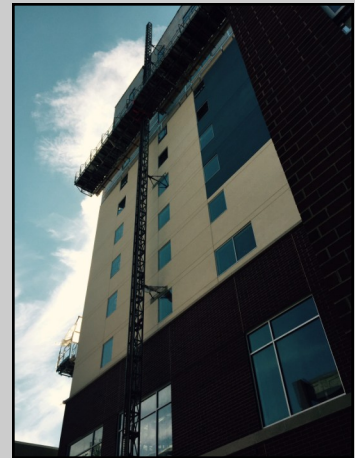
David E. Reasinger, Associate AIA
Pennsylvania State University
1113 Physical Plant Building
University Park, PA 16802
P: 814.863.3868
F: 814.865.3737
der19@psu.edu

WWW.AIAMIDDLEPA.ORG

Please be sure to visit the AIA Middle PA Chapter website to view the following:

- Chapter Officers
- Calendars
- Newsletter Archive
- Executive Committee Minutes
- Membership Information
- AIA Links
- Sponsorship & Advertising
- Mission Statement
- Project Photos

Fraser Centre Tour *(Continued from Page 1)*



AIA Associates Corner — 2016 Links

Jana Brink, Associate AIA

AIA PA Regional Associate Director

jena.brink@gmail.com

Vacant

AIA PA Associate Director

David E. Reasinger, Associate AIA

PA Associate Committee Member

der19@psu.edu

Sean Sheffler, AIA

PA Coordinator, Intern Development Program (IDP)

idpcoordinator.pa@gmail.com

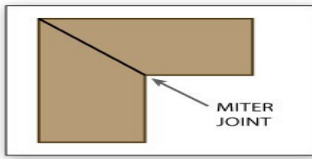
https://twitter.com/IDP_PA

GOOD OF THE ORDER

I believe it is a given acknowledgement by all that our learning never stops in our profession. Changing technologies, changing equipment, changing methods, and changing user practices are just a few of the root causes of continuing education. This was realized years ago by the AIA and was implemented as a requirement for membership which our local Chapter fully supports. A number of States require it as part of maintaining professional registration. I learned a few items on the tour we set up of the Fraser Centre and knocked down one credit requirement for AIA membership and a credit for two of my State registration requirements. It is a good feeling to have the take-away learning items to use in practice and satisfy continuing education at the same time! Please take advantage of these opportunities! We had a good showing for our tour, and we look forward to many more.

Until next time,

Tom



AFFILIATES

Chapter Expands Affiliate Members

Many thanks to the companies that have signed on or renewed their AIA-MPC affiliate membership for 2016. Companies that support that industry are always invited to join the chapter as affiliates, with membership benefits that include strong networking opportunities with members, newsletter articles and ongoing communication that keeps them up-to-date on chapter activities.

Please be sure to thank the following companies and individuals for their support:

Bobrick/Architectural Resources

Mike Clancy, 301-982-6464

mike@archres-inc.com

CFI-Knoll

Nicohl Alford, 717-234-1234

nalford@cfi-knoll.com

Comfort Supply

David Heckler, 412-921-6600

dheckler@comfortsupplypgh.com

EB Endres Inc.

Richard Endres, 814-643-1860

richard@ebendres.com

Fierst Distributing

Tracy Good, 800-242-1614

tgood@fierstdistributing.com

Fishman Flooring

Rowan Brosam, 412-303-0078

rowan.brosam@lfishman.com

Keller Engineers

Randy Diviney, PE, 814-696-7430

rdiviney@keller-engineers.com

Modernfold of PA

Jeff Carty, 814-418-4598

jcarty@modernfoldofpa.com

Patcraft

Bill Ludwig, 706-532-1218

bill.ludwig@patcraft.com

Pella Windows and Doors

Phil DeHaas, 724-831-6631

phil_dehaas@gunton.com

Stahl Sheaffer Engineering

Cristina Barnes, 814-689-1562

cbarnes@sse-llc.com

We appreciate your support! Companies that are interested in joining AIA-MPC as affiliates are welcome to contact Anne McGrath, affiliate coordinator, at annefmcgrath@gmail.com or 814-242-6079 for more information.

Pennsylvania Architectural Registration Exam Study Materials

We are happy to announce that Mr. Rick Karcher, AIA, has arranged for his firm, McKissick Kasun, to house the study materials for anyone embarking on the registration process to use. The materials are archived at their Hollidaysburg office at 412 Allegheny Street, Hollidaysburg, PA 16648. Thanks, Rick!



Second Annual AIA Presentation Seminar !

MODERNFOLD

MODERNFOLD SERVICES EVERYTHING WE SELL

800-248-8300

Save The Date- Reserve your Space Today !

See The Program

September 21st at
THE DAYS INN PENN STATE
240 South Pugh Street
State College, PA 16801
E-mail Jeff Carty at jcarty@modernfoldofpa.com

September 22nd at
THE HILTON GARDEN INN
230 Sycamore Road
Breinigsville, PA 18031
E-mail Steve Erickson at steve@modernfoldofpa.com

Save the date for the second annual AIA seminar
Featuring 5 vendor Lunch and Learns and 6 CEU's available.
Lunch & Learns will be presented from the vendors listed below:



Modernfold Companies of PA |(P) 610-682-0700 |(F) 610-682-1090 | www.modernfoldofpa.com

SPECIAL THANKS TO OUR ADVERTISERS

**CSI COMFORT
SUPPLY inc.**
HVAC SYSTEMS SPECIALISTS

David Heckler
President

150 Kisow Drive • Pittsburgh, PA 15205

cell 412 287 7028 412 921 6600
home 412 835 1128 800 479 2242
dheckler@comfortsupplypgh.com Fax 412 922 9977
www.comfortsupplypgh.com

MODERNFOLD™
OF READING, INC.

JEFF CARTY, CSI
ARCHITECTURAL SALES

SALES OFFICE 9 WINCHESTER RD INDIANA, PA 15701
PHONE: 814-418-4596

CONTRACT OFFICE 75 NORTH HAAS STREET TOPTON, PA 19562
PA: 800-248-8300
FAX: 610-682-1090

JCARTY@MODERNFOLDPA.COM
WWW.MODERNFOLDPA.COM

Mike Clancy
Bobrick/
Architectural Resources, Inc.

7835 Belle Point Drive
Greenbelt, MD 20770

P-877-426-7426 F-301-982-5100

**STAHL SHEAFFER
ENGINEERING**

Cristina L. Barnes
Marketing Manager

301 Science Park Road, Suite 333
State College, PA 16803
cbarnes@sse-llc.com

814-880-5732
814-689-1562
814-689-1885

sse-llc.com

Richard Endres Jr.
President

◆ Architectural Millwork
◆ Wood-Mode Kitchens
◆ Food Service Casework

ENDRES
MILLWORK & CABINETS

P.O. Box 396
Huntingdon, PA 16652
www.ebendres.com
e-mail richard@ebendres.com

P. 800.635.2843
P. 814.643.1860 x104
Fax 814.643.2981
Cell 814.386.1947

FIERST DISTRIBUTING COMPANY
DESIGN DRIVEN DISTRIBUTION
Porcelain Ceramics Glass Tile
Natural Stone Hardwood Supplies
www.FIERSTDISTRIBUTING.com

Tracy Good
Architectural/Design Representative

746 Trumbull Drive
Pittsburgh, PA 15205
Email: tgood@fierstdistributing.com

Office: (412) 429-9300
Office: (800) 242-1614
Cell: (412) 337-4366
Fax: (800) 486-1293

Distributor and Installer of
Quality Building Products

Guntton
CORPORATION

164 Rolling Ridge Drive
State College, PA 16801

Phil DeHaas
Commercial Sales

Cell: 724.831.6631
Fax: 814.231.0162
phil_dehaas@guntton.com

COMMERICAL
Window and Door Solutions

OCULUS
BUILDING SOLUTIONS, LTD.
Commercial Glazing Contractor

Please call Dee Columbus at
814-749-7952 to place
an advertisement.


(Advertisers continued on Page 7)

SPECIAL THANKS TO OUR ADVERTISERS

(Continued)

KELLER ENGINEERS, INC.

Randal S. Diviney, PE
Vice President
Director of Structural
Engineering



Civil • Structural • Survey

420 Allegheny Street
Hollidaysburg, PA 16648
Phone: 814.696.7430
Mobile: 814.937.9449
Fax: 814.696.0150
rdiviney@keller-engineers.com
www.keller-engineers.com



BILL LUDWIG
Account Manager

mobile 412-302-1751
bill.ludwig@patcraft.com
Pittsburgh and Central PA
Pittsburgh, PA 15129



Shaw® © 2013 Shaw, a Bechtel Group Company

Please call Dee Columbus at
814-749-7952 to place
an advertisement.